

777HO11186 PURSUIT

Reg: HOCAN000012857690
RHA: %

DOB: 08/03/2017
DMS: 234 aAa: 243156 AA A1A2

Pine-TRee-I Pursuit TC TP TR
Imax x Profit x Supersire



08/2023 CDCB SUMMARY MACE				NM\$ +996	
Milk	+1510	99%R	Cheese Merit \$	+1007	
Fat	+74	+0.05%	FM\$ +923	GM\$	+907
Protein	+60	+0.04%	Gestation Len. -2	MSP	+109
CFP	+134		EFI 10.7%	gEFI 11.9%	
SCS	2.87	97%R	Mastitis +3.2	Fert. Index	+0.5
PL	+7.0	93%R	Livability +1.4	Heifer Liv.	+0.7
DPR	-0.8	94%R	HCR +4.0	CCR	+1.1
RFI	-286		30664m 4.1%	1268f 3.3%	1002p
Feed Saved	+197	58%R	3977 Dtrs	695 Herds	25% US

08/2023 CALVING SUMMARY				SCE 2.1 %	
Sire Calving Ease	2.1%	98%R	13862 Obs		
Daughter Calving Ease	1.4%	95%R	786 Obs		
Sire Stillbirth	6.3%	96%R	13238 Obs		
Daughter Stillbirth	3.8%	94%R	758 Obs		

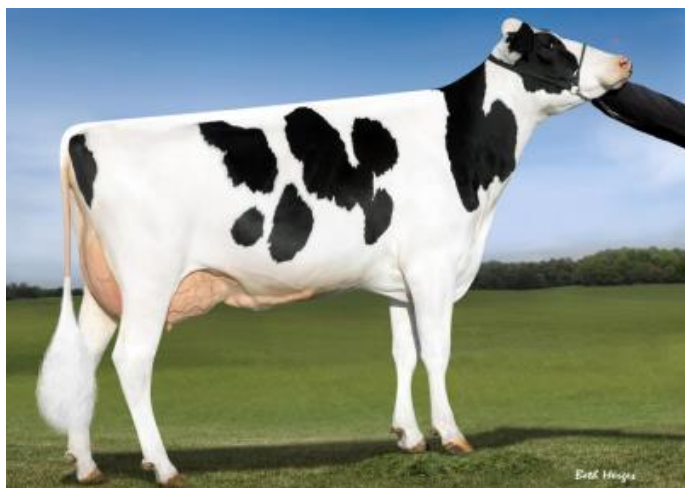
08/2023 HA TYPE SUMMARY				TPI +2944	
PTAT +1.63	99%R	UDC+1.35	FLC+1.29	BSC +0.58	1299 D / 358 H
Stature	+1.20	Tall			
Strength	+1.08	Strong			
Body Depth	+0.78	Deep			
Dairy Form	+1.67	Open Rib			
Rump Angle	+1.20	Sloped			
Thurl Width	+1.45	Wide			
Rear Legs-Side	+0.18	Sickle			
Rear Legs-Rear	+1.82	Straight			
Foot Angle	+1.20	Steep			
Feet & Legs Score	+1.36	High			
F. Udder Attachment	+1.14	Strong			
Rear Udder Height	+1.84	High			
Rear Udder Width	+2.83	Wide			
Udder Cleft	+0.54	Strong			
Udder Depth	+0.80	Shallow			
Front Teat Placement	+0.85	Close			
Rear Teat P. Rear	+0.88	Close			
Teat Length	+0.36	Long			

Sire: Silverridge V Imax
Dam: Pine-TRee 9882 Prof 7019-ET VG-86

MGS: S-S-I Partyrock Profit-ET
MGD: Ocd Supersire 9882-ET VG-86
02-01 3x 365d 31870m 4.1 1310f 3.2 1023p
MGGs: Seagull-Bay Supersire-ET TV TL TY TD
MGGD: Ocd Robust Shimmer-ET EX-90
02-03 3x 365d 34350m 3.5 1200f 3.0 1021p



Dam: Pine-TRee 9882 Prof 7019-ET



MGD: Ocd Supersire 9882-ET



MGGD: Ocd Robust Shimmer-ET